

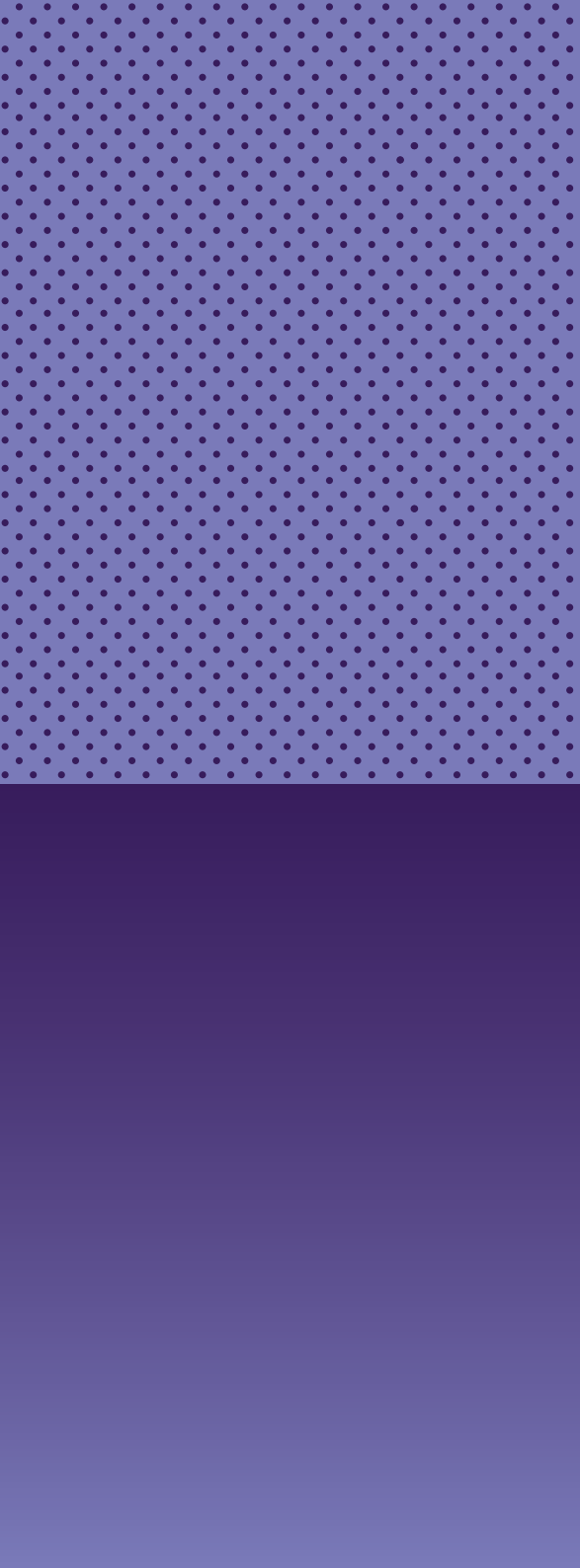


CHÂTEAUROUX

@paris2024

RESIDENTS' GUIDE TO THE OLYMPIC AND PARALYMPIC VILLAGE

EN GAMES WIDE O
WIDE OPEN GAME
OUVRONS GRAND
RAND LES JEUX OUV
EN GAMES WIDE O
WIDE OPEN GAME
OUVRONS GRAND
RAND LES JEUX OUV
EN GAMES WIDE O
WIDE OPEN GAME
OUVRONS GRAND
RAND LES JEUX OUV
EN GAMES WIDE O



CONTENTS

01

INTRODUCTION

PAGE 2

02

**TEAM
PROCESSING**

PAGE 8

03

**RESIDENT
SERVICES**

PAGE 9

04

CATERING

PAGE 13

05

TRANSPORT

PAGE 14

06

**LIFE IN THE
VILLAGE FOR
GREENER GAMES**

PAGE 16

07

**OTHER
INFO**

PAGE 17

01

WELCOME TO THE OLYMPIC AND PARALYMPIC VILLAGE CHÂTEAUROUX



It is a great honour and source of immense pride to welcome you to the Paris 2024 Olympic Games.

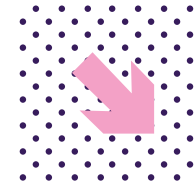
In keeping with the commitment to use existing infrastructure as far as possible and sharing the Games adventure with the entire French nation, we have chosen to spread the competition and non-competition venues across several French cities.

The Olympic and Paralympic Village Châteauroux is ideally located close to the competition venue. It will be home to 3 residences during the Olympic phase and one residence during the Paralympic phase. More than just accommodation facilities, these living spaces are also meeting and gathering points where athletes from around the world can come together.

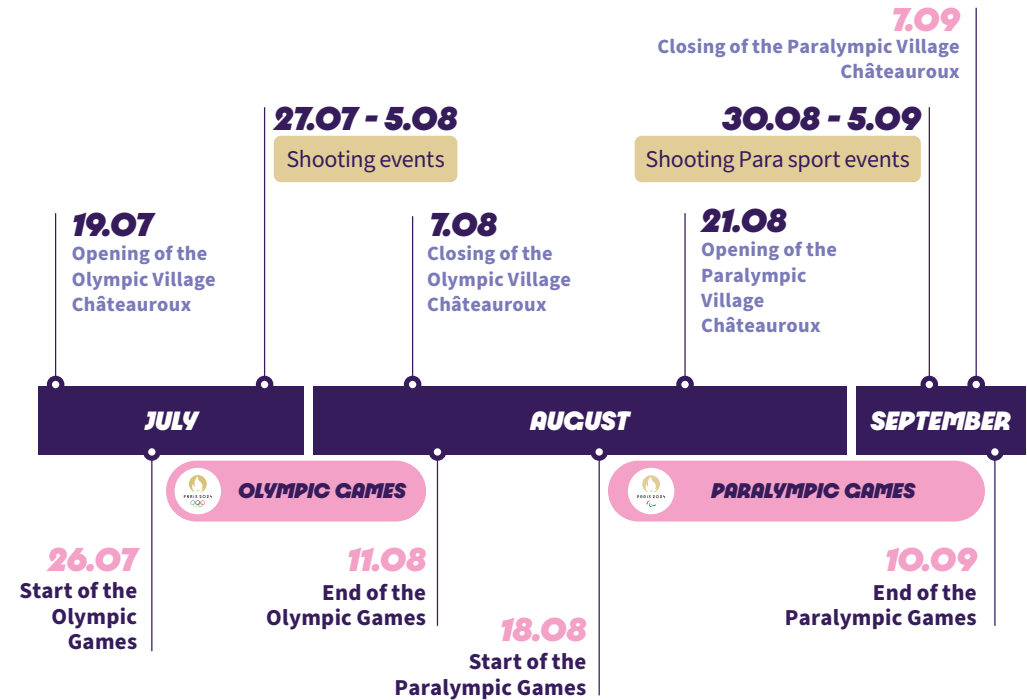
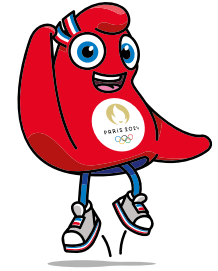
We know just how important your preparation and concentration are at this decisive time, which is why we have sought to create an environment conducive to performance and serenity. Our teams are on hand 24 hours a day to look after your needs and ensure your comfort.

On behalf of the Paris 2024 teams, we hope you enjoy the Games and that your stay with us will remain a magical moment!

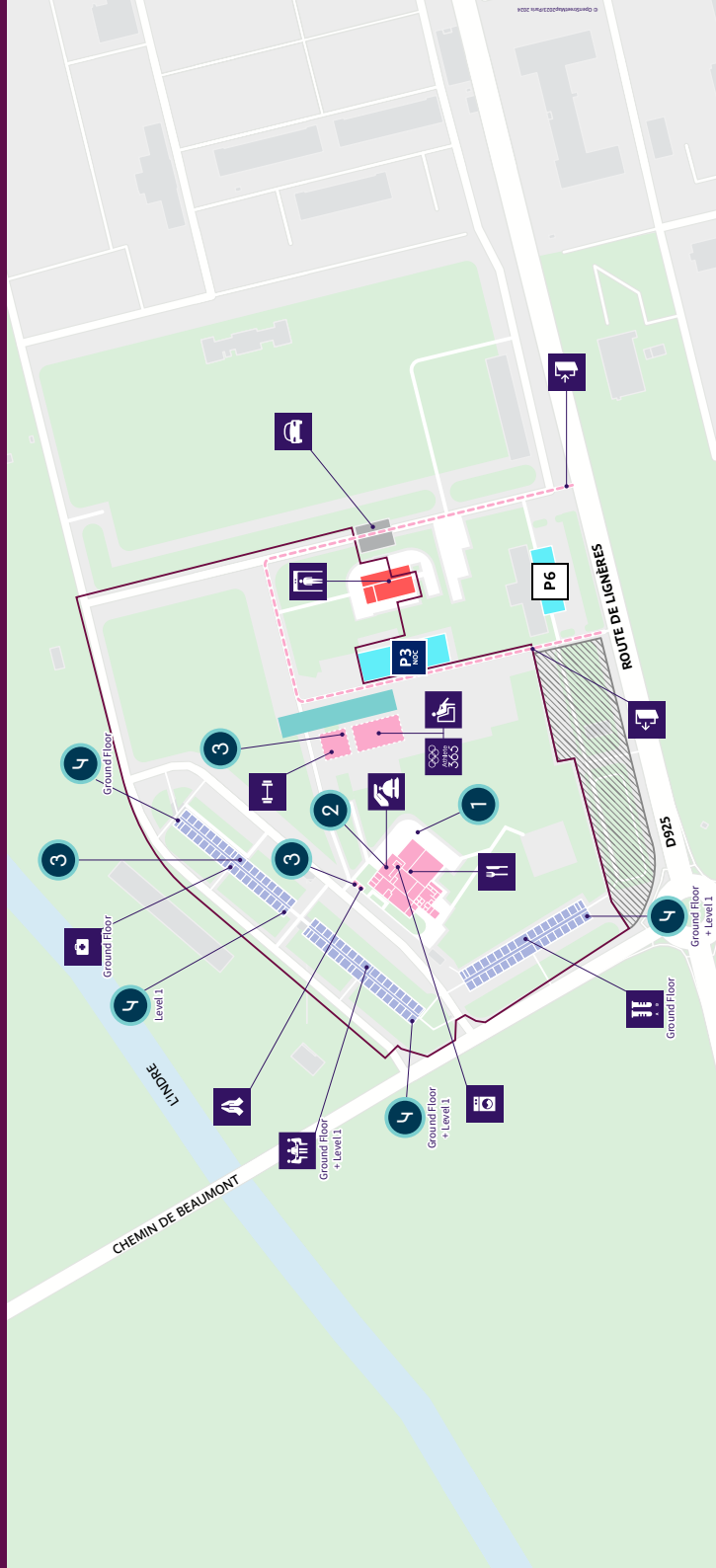
Guillaume MOUSSET
Village Manager - Châteauroux



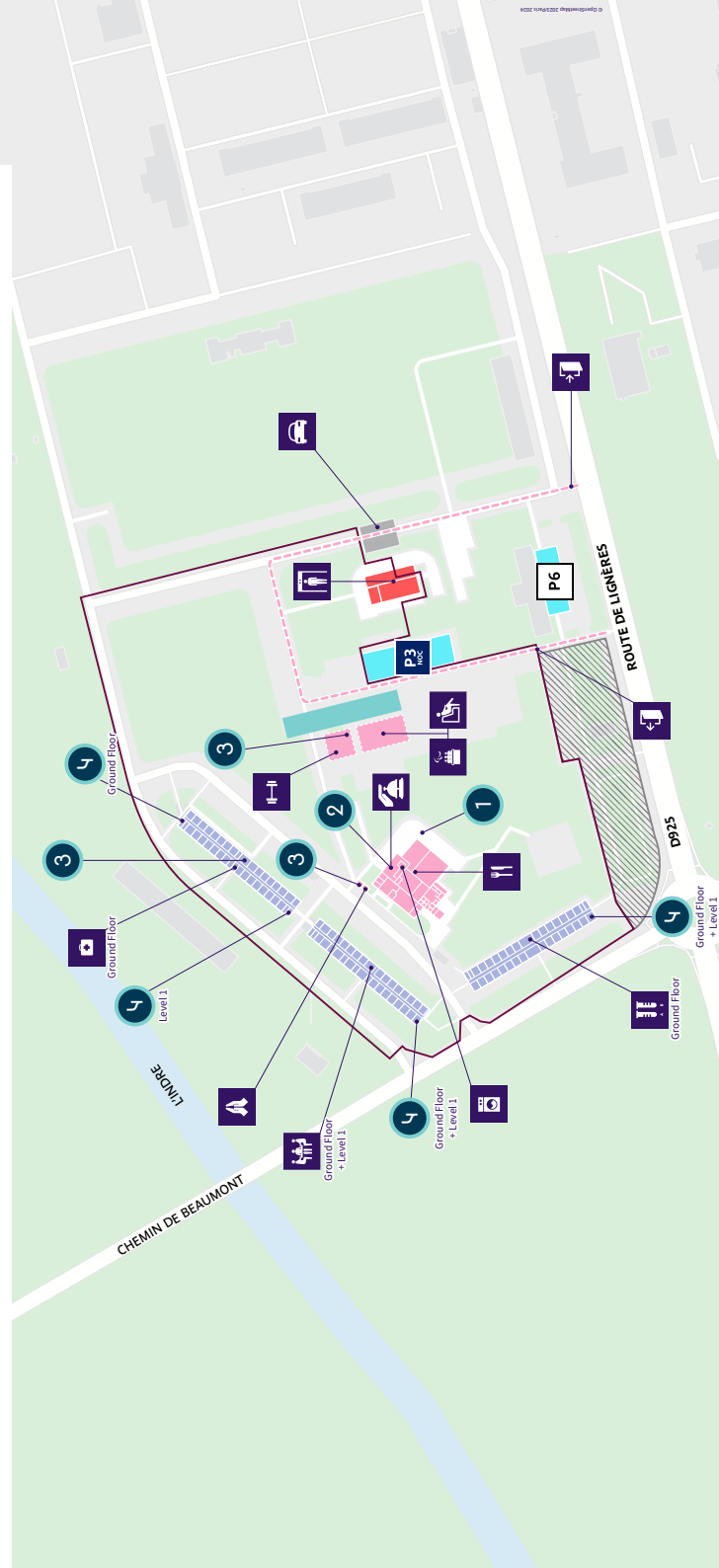
VILLAGE SCHEDULE



CHÂTEAURoux OLYMPIC VILLAGE FOCUS PESI



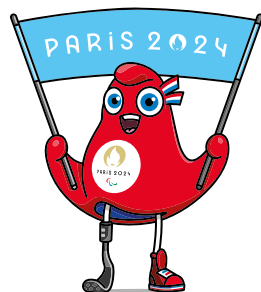
- Security perimeter
- Operational Zone
- Internal Village Transport Service route
- Transport Mall
- Entrance
- Exit
- Residential buildings
- Residential services
- Parkings
- Team Processing Center (TPC)
- Pedestrian Screening Area (PSA)
- Vehicle Screening Area (VSA)
- Resident Centre
- Dining Hall
- Athletes' lounge
- Fitness Centre
- Laundry desk
- Athlete365 House
- Prayer space
- Bookable meeting rooms
- Medical room
- Doping Control Station
- Terrace
- NOC Support Desk
- Bookable medical rooms
- Self-service laundries



- Security perimeter
- Operational Zone
- Internal Village Transport Service route
- Transport Mall
- Entrance
- Exit
- Residential buildings
- Residential services
- Parkings
- Team Processing Center (TPC)
- Pedestrian Screening Area (PSA)
- Vehicle Screening Area (VSA)
- Resident Centre
- Dining Hall
- Athletes' lounge
- Fitness Centre
- Laundry desk
- Athlete365 House
- Prayer space
- Bookable meeting rooms
- Medical room
- Doping Control Station
- Terrace
- NOC Support Desk
- Bookable medical rooms
- Self-service laundries

PARALYMPIC VILLAGE CHÂTEAURoux FOCUS PESI

02 TEAM PROCESSING



↓ RESIDENTIAL ZONES

Olympic & Paralympic phase

📍 PESI

Maison Départementale de la Mémoire Militaire
Route de Lignières
36130 Déols (accès par D925)

Olympic phase

📍 LA CHAPELLE SAINT-DENIS

31 Rue du 3^e Régiment d'Aviation de Chasse
36000 Châteauroux

📍 LYCÉE BLAISE PASCAL

29 rue Copernic
36000 Châteauroux

↓ TEAM PROCESSING CENTRE

The Team Processing Centre is the first point of entry on arrival to collect accreditation. It is located at the Chateauroux Shooting Centre.

The full range of accreditation services, including issue resolution and collection of guest passes, are available at this centre.

Accreditation services are not available in the residential zones (PESI, Lycée Blaise Pascal, La Chapelle Saint Denis).

OLYMPIC PHASE OPENING HOURS

📅 From 19/07 to 26/07
🕒 07:00 - 23:00

📅 From 27/07 to 06/08
🕒 07:00 - 21:00

📅 07/08
🕒 07:00 - 18:00

OPENING HOURS PARALYMPIC PHASE

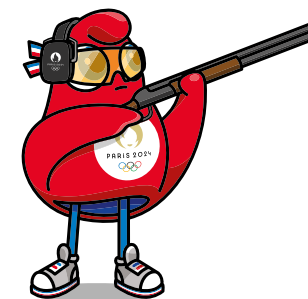
📅 From 21/08 to 29/08
🕒 07:00 - 23:00

📅 From 30/08 to 07/09
🕒 06:00 - 21:00

↓ ACCREDITATION

Accreditation must be carried on you within the Village. It is required to access a number of services and to enter the different controlled zones.

03 RESIDENT SERVICES



↓ RESIDENT CENTRE

Each residence has a Resident Centre open 24 hours a day and providing the following services:



Issue resolution and cleaning and maintenance requests



Bed linen and towel changes.



Concierge service: information on the Village and tourism in Châteauroux



Printing on request



Provision of a computer with Internet access (to be used at the resident centre)



Free soft drinks vending machine and water fountains



Distribution of ice for medical use in authorised quantities



Irons and ironing boards on request



Lost and found



Key replacement (user-pays service) in the event of problems with room access, subject to prior authorisation.



Additional dry cleaning service (user-pays*)



Lounges with TVs showing Games feed and various programme broadcasts

* In recognition of the long-standing partnership between the Olympic and Paralympic Games and VISA, Visa cards are the official payment method.

Residents should report any maintenance or accommodation problems to the Resident Centre.

↓ NOC/NPC SERVICES DESK

📍 PESI
🕒 07:00 - 22:00



The services centre for delegations centralises and facilitates communication and services between Paris 2024 and NOCs and NPCs. This space is only accessible to team officials. Information is available on arrivals and departures, logistics and transport.

(This information is also displayed in the Resident Centre at Lycée Blaise Pascal).



SPORT INFORMATION DESK

A Sport Information Desk is located at the competition venue, where delegations can obtain specific information on training and competition times, sports results, etc.

↓ LAUNDRY

A laundry service is available to residents. Laundry drop-off and collection desks are open every day, from Monday to Sunday, from 08:00 to 13:00 and from 18:00 to 21:00 (no laundry collection on Sundays; laundry dropped off on Sundays will be washed Monday morning). In addition, self-service laundry machines are available free of charge in the residential zones on Saturdays and Sundays.



EARLY MORNING DROP-OFF

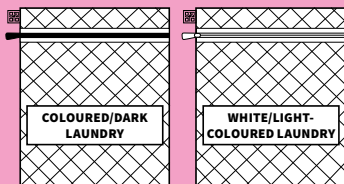
Laundry can be collected the same day (evening)

LATE MORNING DROP-OFF

Laundry can be collected the next morning

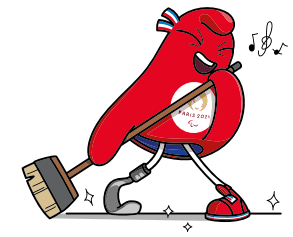
EVENING DROP-OFF

Laundry can be collected the next evening



You will find two laundry bags on your bed on your arrival: one with a white zip for white/light-coloured laundry and one with a black zip for coloured/dark laundry.

It is your responsibility to sort clothes properly, ensuring that they do not overflow from the bags.



↓ HOUSEKEEPING

Every 2 DAYS

- Bins emptied (bathrooms and living areas)
- Bathrooms cleaned and toilet paper replenished
- Towels changed

Every 4 DAYS

- Sheets and pillowcases changed and beds made
- Bedroom and living area floors vacuumed and washed

↓ WASTE SORTING

Paris 2024 provides containers within residential zones for waste sorting and disposal.

ORGANIC WASTE	GLASS	GENERAL WASTE
Food waste only 	Glass only, no lids or caps 	Everything else: napkins, tissues, masks, lids
RECYCLABLE PACKAGING	COCA-COLA BOTTLES	
Bottles, cans, yoghurt pots (with lids), plastic or cardboard food packaging, coffee cups, coffee pods 	Empty Coca-Cola bottles (with caps) 	

FITNESS CENTRE

An area at the PESI is dedicated to physical preparation, next to the dining hall. A gym is available to use on the basement level of Lycée Blaise Pascal. There is no dedicated gym for residents at La Chapelle Saint-Denis. However, residents have full access to the fitness centres at the PESI and Lycée Blaise Pascal.

OPENING HOURS

🕒 07:00 - 22:00



ATHLETES' LOUNGE

Relaxation spaces are available to athletes within the residences and are equipped with TVs, rest furniture, and arcade games (table football, air hockey, etc.). Snacks are also provided in the athletes' lounge (cereal bars, fruit, hot and cold drinks).

OPENING HOURS

🕒 09:00 - 22:00



MULTI-FAITH CENTRE

Two bookable multi-faith centres are open to residents, one in building 5 at the PESI and another on the 1st floor of Lycée Blaise Pascal. Booking can be made at the Resident Centre, where information on the closest places of prayer to the Village is also available.

MEDICAL & DOPING CONTROL SERVICES

SERVICE

OPENING HOURS

DATES OF OPERATION

PRIMARY CARE

24 hours (at the competition venue during the day and at the PESI overnight between 20:00 and 08:00*)

Olympic phase
From 19/07 to 07/08

PHYSIOTHERAPY

08:00 - 22:00 (at the PESI)

Paralympic phase
From 21/08 to 07/09

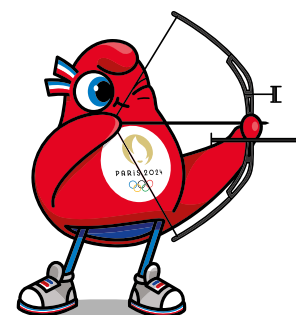
OSTEOPATHY

11:00 - 19:00 (at the PESI)

* The on-call doctor can travel to Lycée Blaise Pascal and to La Chapelle Saint-Denis if needed. Dedicated doping control areas are located at the PESI site and at Lycée Blaise Pascal.



ATHLETE365 HOUSE



The Athlete365 House is reserved for athletes and has an IOC and IPC Athletes' Commission voting corner. It provides information on the various Athlete365 programmes and runs other activities for athletes.

There is also an integrity space, in which the World Anti-Doping Agency awareness-raising programme will be implemented.

04 CATERING

DINING HALLS



The food service offers a wide range of meals that meet all nutritional and dietary needs, taking into account residents' cultural, religious and vegetarian requirements.

MEAL	PESI	LYCÉE BLAISE PASCAL	LA CHAPELLE SAINT-DENIS
BREAKFAST	06:00 - 10:00	06:00 - 10:00	06:00 - 10:00
LUNCH	12:00 - 15:00	12:00 - 15:00	
DINNER	18:00 - 23:00	18:00 - 23:00	

"Knife & Fork" accreditation or meal vouchers must be shown to gain access to the dining halls.

Residents at La Chapelle Saint-Denis can eat at the dining halls in the other two residential zones for lunch and dinner. Snacks are served in the athletes' lounge from 09:00 to 22:00 at the PESI and at Lycée Blaise Pascal.

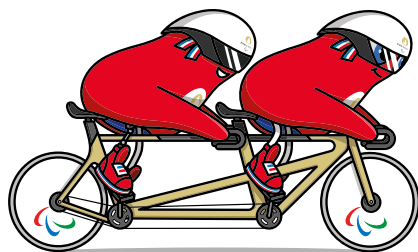


DRINKS MACHINES

Self-service water fountains are located at the dining halls at Lycée Blaise Pascal and at the PESI, and are available during dining hall opening hours for use with own reusable water bottles or the reusable glasses provided.

Self-service vending machines and fridges are also provided in the athletes' lounge and in the Resident Centre.

05 TRANSPORT



ATHLETE TRANSPORT (TA)

Olympic phase



Lycée Blaise Pascal > La Chapelle Saint-Denis
> Shooting Centre **25 min**



20/07 to 06/08: every 30 mins during training
Every 20 mins during competition



PESI > Shooting Centre **10 min**



20/07 to 06/08: every 30 mins during training
Every 20 mins during competition

Paralympic phase



PESI > Shooting Centre **10 min**



21/08 to 06/09: every 15 mins



TRANSPORT CONNECT

Olympic phase



Châteauroux station > Lycée Blaise Pascal > PESI
> Shooting Centre **25 min**



16/07 to 06/08: every 20 to 90 mins

Paralympic phase



Châteauroux station > PESI > Shooting Centre **20 min**



20/08 to 06/09: every 20 to 30 mins

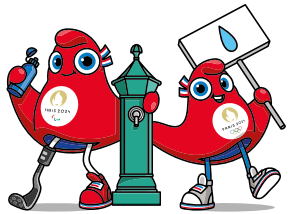


MOBILITY

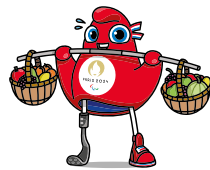
Bikes provided by your delegation may enter and leave the Village freely and be used to travel around the city. Please make sure bikes have their stickers affixed in order to identify them. Bikes must be left in the dedicated areas within the security perimeter. Personal padlocks and helmets are not provided.

Shuttle buses will run during the Paralympic phase to facilitate travel within the PESI for people with reduced mobility.

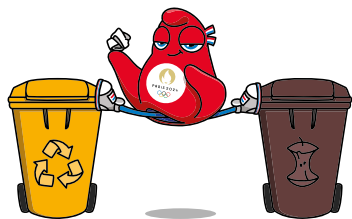
06 LIFE IN THE VILLAGE FOR GREENER GAMES



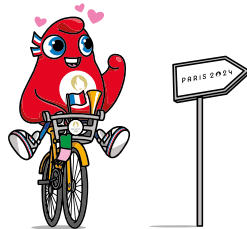
USE YOUR REUSABLE DRINK BOTTLE AND THE WATER FOUNTAINS



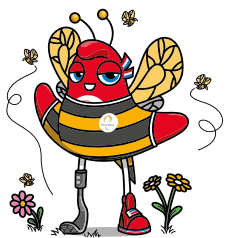
EAT MORE RESPONSIBLY AND AVOID FOOD WASTE



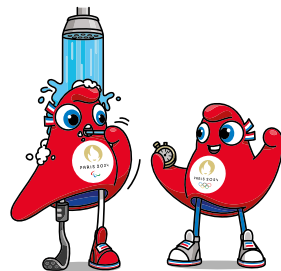
DO NOT LITTER AND FOLLOW SORTING INSTRUCTIONS



TRAVEL WITH A LOW CARBON FOOTPRINT



RESPECT THE VENUES AND BIODIVERSITY



SAVE RESOURCES: WATER, ENERGY AND FACILITIES

07 OTHER INFO

↓ OLYMPIC OPENING CEREMONY

Residents wishing to take part in the Olympic Games Opening Ceremony in Paris may do so, subject to the marching pass quota allocated to each NOC.

For those wishing to remain at the Olympic Village Châteauroux, the ceremony will be broadcast live in the Village.



↓ PARALYMPIC OPENING CEREMONY

Residents wishing to take part in the Paralympic Games Opening Ceremony in Paris may do so, subject to the marching pass quota allocated to each NPC.

For those wishing to remain at the Paralympic Village Châteauroux, the ceremony will be broadcast live in the Village.



PARIS 2024 STORE

A LICENSED OFFICIAL MERCHANDISE STORE IS LOCATED AT THE COMPETITION VENUE AT THE SHOOTING CENTRE.

Athletes and officials will have early access to make purchases in store on 25/07 from 10:00 to 16:00 and on 26/07 from 10:00 to 13:00. During the store's public opening hours, athletes and official will have priority access to the store on request.

As residents of this Village, you can also buy products online at the Paris 2024 official store. You receive a 25% discount in store and online. Please contact your Chef de Mission or delegation representative on site to obtain your single-use promotional code*. Ordered products will be delivered to your home address**.

* Offer valid until 30 September 2024, exceptions may apply.

**Exceptions may apply to certain destinations.

Please report any incidents in your residential zone to the Resident Centre reception, open 24 hours a day.

↓ EMERGENCY CONTACTS

112

European
emergency
number

15

Emergency
services
(Ambulance)

17

Police

18

Fire brigade

↓ POWER OUTLETS

Electricity within the Village is supplied at a minimum voltage of 230V with 16 A power sockets. Type-E power sockets will be used in all buildings. Adaptors are not provided in bedrooms.

↓ WI-FI

Paris 2024 provides a Wi-Fi network in the residential and communal areas of the Village.

↓ DIALLING CODE

The international dialling code for France is 33. To dial a number, remove the first digit then add +33 or 00 33.

↓ DELIVERY

Addresses may be different for deliveries (post, takeaways, packages, etc.) due to security reasons. Please ask at the Resident Centre for exact indications.

BUILDING RULES



NO COOKING

Cooking is not permitted in the residential apartments or outside spaces of the Village. Cooking appliances such as barbecues, rice cookers, toasters, gas stoves, induction hobs, plate warmers, etc. are prohibited.



SMOKING

Delegation representatives will be informed of smoking area locations on their arrival.



ALCOHOL

Alcoholic drinks will not be available for sale in the Village, but alcohol may be consumed within the Village.



QUIET HOURS

Between 22:00 and 07:00, moderate noise is tolerated within the Village and accommodation and communal areas must be quiet.



ELECTRIC BIKES, SCOOTERS

Delegations may bring a limited number of non-electric bikes. Electric bikes and electric or non-electric scooters are not authorised in the Châteauroux Village.



ICE BATHS

There are no ice baths at the Olympic Village Châteauroux.

Residents must observe the basic rules of community living, and comply with the rules and regulations of the Olympic and Paralympic Village. Incivility and inappropriate behaviour is subject to penalty.

LOCAL SERVICES

↓ FROM THE PESI

PHARMACY

67 Av. de La Châtre
36000 Châteauroux

Tuesday to Saturday:
9:00 - 12:30
and 14:00 - 19:30
Monday and Sunday:
09:00 - 19:30

10 mins by car

BANK

20 Pl. Gambetta
36000 Châteauroux

Tuesday to Friday:
08:45 - 12:30 and
14:00 - 18:00
Saturday: 08:45 - 12:30

9 mins by car

GENERAL STORE

47 Rue Pierre Gaultier
36000 Châteauroux

Monday to Saturday:
08:30 - 21:00
Sunday: 08:30 - 12:30

10 mins by car

↓ FROM LYCÉE BLAISE PASCAL

PHARMACY

9 Bd Blaise Pascal
36000 Châteauroux

Tuesday to Friday:
08:45 - 12:30
and 14:00 - 19:30
Saturday: 08:45 - 12:30
and 14:00 - 18:00

4 mins on foot

BANK

68 Av. Pierre de Coubertin
36000 Châteauroux

Tuesday to Friday:
08:45 - 12:30
and 14:00 - 18:00
Saturday: 08:45 - 12:30

11 mins on foot

GENERAL STORE

19 Bd Blaise Pascal
36000 Châteauroux

Monday to Saturday:
09:00 - 19:00

4 mins on foot

↓ FROM LA CHAPELLE SAINT-DENIS

PHARMACY

15 Pl. Gambetta
36000 Châteauroux

Tuesday to Friday:
08:30 - 20:00
Saturday: 08:30 - 12:45
and 13:45 - 19:00

19 mins on foot

BANK

20 Pl. Gambetta
36000 Châteauroux

Tuesday to Friday:
08:45 - 12:30
and 14:00 - 18:00
Saturday: 08:45 - 12:30

19 mins on foot

GENERAL STORE

3 Rue Molière
36000 Châteauroux

Monday to Saturday:
09:00 - 19:30

19 mins on foot



Paris 2024 thanks its Partners for their dedication.

Worldwide Partners



Premium Partners



Official Partners



Official Supporters

Abatable	ABEO	Air Liquide	Airweave	Aquatique Show	Arena	CRYSTAL	
Doublet Wasserman	DXC Technology	Egis	Enedis	ES Global	Eviden	Fitness Park	
Fnac Darty	Garden Gourmet	Gerflor	Groupe RATP	Highfield	Hype	INDIGO	
La Poste	Loxam	Lyreco	Miko	Mondo	MTD	Myrtha Pools	OnePlan
Optic 2000	Ottobock	Randstad	Rapiscan Systems	Re-uz	RGS Events	Saint-Gobain	
Salesforce	SCC	Schneider Electric	SEDIF	SLX	SNCF	Sodexo Live!	Technogym
Terraillon	Thermo Fisher Scientific	Tourtel Twist	VINCI	Viparis	Westfield		



www.paris2024.org

 Paris2024 |  Paris2024 |  Paris 2024

 paris2024 |  Paris 2024 |  paris2024officiel